

APPAREL + RIDING GEAR  
SPECIAL EDITION

# GEARED UP

HELMETS  
+ GOGGLES

TECHNICAL  
+ CASUAL WEAR

by

**can-am**

OUTFITTIN' FOR OFF-ROAD LIVIN'

INTERNATIONAL OFF-ROAD DAY  
IS HERE TO STAY

OUR LATEST IN ALL-WEATHER  
APPAREL AND PROTECTION

THERE ARE THOSE WHO LET LIFE  
PASS THEM BY, AND THOSE WHO  
ARE BORN GO-GETTERS, DOERS  
WHO ALWAYS CHARGE FORWARD,  
BELIEVING THERE'S MORE TO LIFE  
THAN SIMPLY LIVING.

THAT EVERY PATH IS AN INVITATION -  
TO GO SOMEWHERE YOU HAVEN'T BEEN,  
TO FEEL ALIVE LIKE YOU'VE NEVER FELT,  
TO CHALLENGE LIMITS TO THE VERY BRINK.

EXHILARATION IS NOT GIVEN, IT'S EARNED.  
BY THOSE UNAFRAID TO GO AGAINST  
THE GRAIN, DETERMINED TO RULE IT.

FOR ALL WALKS OF LIFE,  
FROM ALL FOUR CORNERS.

BREAK FREE. BE FEARLESS.  
LET YOUR HEART SKIP A BEAT.

FEEL THAT FULL-THROTTLE FREEDOM.

**OFF-ROAD LIVIN'**

***can-am***<sup>®</sup>

- 04 WE ARE ALL OFF-ROAD**  
INTERNATIONAL OFF-ROAD DAY
- 06 ARMOR AGAINST THE ELEMENTS**  
APPAREL: MORE THAN PROTECTION
- 08 WELCOME TO THE FAMILY**  
NEW HELMETS FOR EVERY CLIMATE
- 10 A MATCH MADE IN MUD**  
NEW WADER APPAREL IN PARTNERSHIP WITH FINNTRAIL
- 12 HEAD-TO-TOE OUTFITS**  
WINTER + PERFORMANCE + CASUAL
- 18 PRODUCT INFORMATION**  
FULL DETAIL OVERVIEW

**can-am**



# WE ARE ALL OFF-ROAD

#INTERNATIONALOFFROADDAY



## LOOKING BACK AT THE INAUGURAL INTERNATIONAL OFF-ROAD DAY

On October 8, 2021, riders all over the world celebrated the first-ever International Off-Road Day. We ventured into unexplored places. We hit the trails—and the mud—with our families, friends and riding buddies. And if it was a work day, we rolled up our sleeves and got the job done.

“International Off-Road Day is for everyone across the five continents who, like us, has off-roading in their DNA,” said Julie Tourville, Director Global Marketing, Can-Am Off-Road at BRP. “It doesn’t matter what vehicle you drive; just get out and ride, and be thankful for the land, the trails, the fun, and of course, the vehicles that get the job done in some of the harshest conditions out there.”

In our playgrounds of trails, sand, rocks, dirt and mud, having fun and helping each other through the challenge is something to celebrate every time we go out. But on International Off-Road Day, it’s time for all riders to do it together. In 2021, Can-Am friends and

ambassadors gathered for group rides as far as Australia, Brazil and Sweden, with many more riders around the globe exercising their love of the off-road.

International Off-Road Day is here to stay. Wherever you ride, every year on October 8, we invite you to join the off-road community to celebrate off-road livin’.





**SWEDEN**



**MEXICO**



**"IF IT'S RAINING,  
IF IT'S SHINING, IF IT'S  
SNOWING, IT DOESN'T  
MATTER, WE'RE GOING  
RIDING TODAY."**

**CAN-AM MUDDING AMBASSADOR  
DUSTIN JONES RALLIES THE RIDERS**

**USA**



**BRAZIL**



**AUSTRALIA**

*What makes this day special?*

**"...BEAUTIFUL SCENERY,  
BEAUTIFUL PLACES, AND  
SPENDING IT WITH FRIENDS  
AND THE ONES YOU LOVE  
TO BE AROUND."**

**CAN-AM PRO RACER CHAD HUGHES**



**CANADA**

**THE WORLD**







DUSTIN JONES  
@dustinbattleaxejones



# ARMOR AGAINST THE ELEMENTS

## MORE THAN PROTECTION

What you wear when you jump into the cockpit isn't just about being safe, it's about maintaining optimal comfort for the environment that you're in. And for those heading out into the harshest of conditions, quality apparel can mean the difference between a good day and a freakin' awesome day.

But it's also about expressing yourself. That's why our latest apparel lineup and protective gear not only perform to the highest standard, our designs encourage you to make a statement on who you are as a rider.

It's time to suit up for off-road livin'.



# FULL-FACE VERSATILITY

WELCOME  
TO THE FAMILY

Can-Am introduces two new helmets for 2022: the Modular Exome and the lightweight Pyra.



## EXOME HELMET - NEW -

Designed for riders who enjoy venturing into rougher terrain, mud or cooler temperatures with a removable peak for their preferred look.



3 colors available



### AIRFLOW

Ventilation from front to back giving you ultimate comfort all day long.

### MODULAR

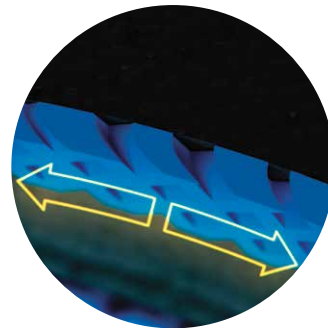
Chin protector folds up for convenience, down for full-face protection.

### FULL VIEW

Visor allows wide field of vision and can be equipped with optional Pinlock(R) 70 lens for additional fog-free performance.







**PROTECTION**  
Energy Reduction Technology (ERT) redirects force away from the head in the event of a fall.

**PYRA HELMET - NEW -**

Designed in-house by BRP for optimal performance.

- 3 Pyra solid colorways
- 4 Pyra Dune graphic colorways

-  LIGHTWEIGHT
-  ACCESSIBLE
-  DOT / ECE



**AIRFLOW**  
Don't sweat the ride with an open chin, removable wind deflector and rear vents.



**LIGHTWEIGHT**  
Our lightest helmet at 1,295 g (size large).

+ More product information on page 20.



**can-am** × **FINNTRAIL**

# CAN-AM WADES IN WITH FINNTRAIL

## A MATCH MADE IN MUD

When we decided to enter the wader category, we knew it had to perform to the same impeccable standards as our Can-Am vehicles. That's why we sought out Finntrail for our first-ever mud and ATV-specific line of wader apparel.

The 3-piece system of jacket, waders and lace-up boots links together to create a waterproof, windproof and mudproof shell. Layer up to tackle the harshest of wet conditions year-round.







1

**JACKET**

100% waterproof and mudproof jacket designed for ultimate mobility and freedom of movement, equipped with magnetic storm flap and mud-resistant zippers.

**WADERS**

Waders are made to allow you to cross water obstacles to up to 5 feet deep and remain dry and comfortable, thanks to the durable membrane and integrated neoprene booties.

**BOOTS**

Comfortable for all-day off-roading and designed to fit with the waders' neoprene booties.



2

**“SUPER LIGHTWEIGHT,  
SUPER COMFORTABLE  
AND REALLY DURABLE.”**

FINNTRAIL AND CAN-AM  
AMBASSADOR OSTACRUISER



3



MUDPROOF



REINFORCED



LIGHTWEIGHT

**Waterproof**



**Breathability**



**Durability**



- 1 · CAN-AM X FINNTRAIL MUDWAY JACKET 286825
- 2 · CAN-AM X FINNTRAIL ENDURO WADERS 286826
- 3 · CAN-AM X FINNTRAIL SPORTSMAN BOOTS 444263

+ More product information on page 23.





1



2



3



4



CUTS WIND



REINFORCED



REFLECTIVE

**Waterproof**

●●●○○

**Breathability**

●●●○○

**Warmth**

●●●●●

1 - CAN-AM EXOME HELMET 929068\_07

2 - EXPEDITION JACKET 440982

3 - EXPEDITION HIGHPANTS 286814

4 - EXPEDITION GLOVES 446337

➕ More product information on page 20 and 23.



# CUT THE COLD



## INTRODUCING OUR EXPEDITION LINE

Work doesn't stop on a cold day. Built tough for harsh conditions and available in both clim8® heated and regular non-heated versions. Combine our Expedition jacket, pants and gloves to stay warm and comfortable all winter long.



### EXPEDITION RADIANT JACKET 440982

- › **Durable:** Heavily reinforced in all the right places to last for years.
- › **Storage:** Have everything you need close at hand.
- › **Insulated:** Stays warm but keeps breathing for all-day comfort.

### EXPEDITION RADIANT GLOVES 446346

- › Warmth and dexterity in a single package.



### INTRODUCING CLIM8®

- › **Intelligent heat:** The clim8® autonomous heating system uses sensors to track your body temperature and adjusts to your heat level.
- › **Smart app control:** Set your ideal temperature on the clim8® app and let it do the rest.
- › **Backed by data:** Body heat mapping by clim8 lab allows optimal thermal comfort.





# TOP PERFORMERS

Ride in comfort all day long with the windproof or lightweight breathable Tetra jersey. Whatever environment you head into, we've got you covered.



+ More product information on pages 24–25.

- BUNDLE No. 1** WINDPROOF JERSEY 454548 CAN-AM STEER GLOVES 446329 FLINT DUNE GOGGLES 448726 PYRA HELMET 929038
- BUNDLE No. 2** EMBLEM JERSEY 454537 STEER GLOVES 446329 FLINT DUNE GOGGLES 448726 PYRA DUNE HELMET 929039
- BUNDLE No. 3** TETRA JERSEY 454550 STEER GLOVES 446329 FLINT DUNE GOGGLES 448726 PYRA HELMET 929038





# CASUAL AFFAIR

Fly your Can-Am colors.



+ More product information on pages 28-33.





# CAMO CAN-AM STYLE

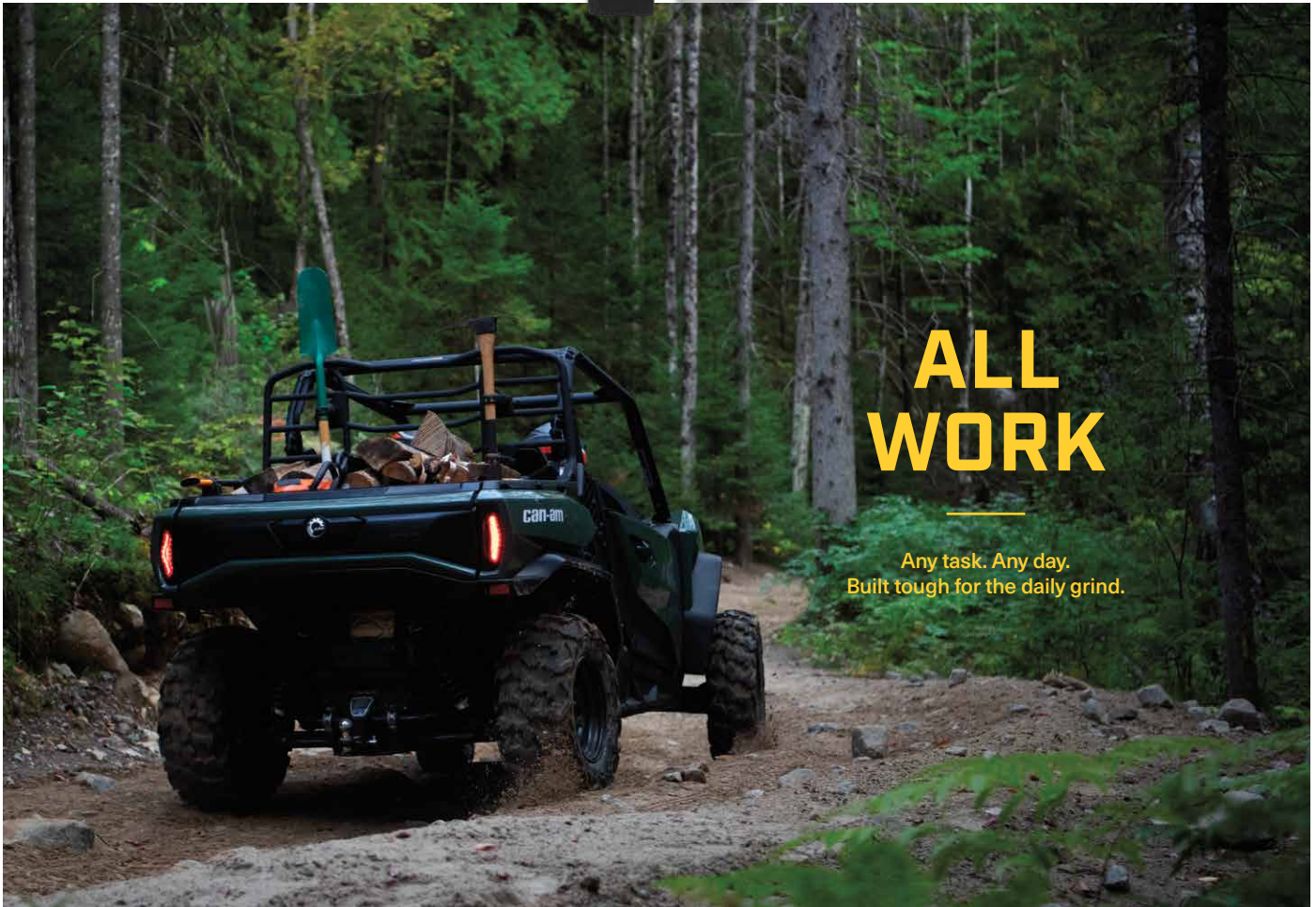
Wear it proud, on or off the trail.



- 1 • UTILITY OVERSHIRT 454552    2 • UTILITY SHORTS 454636    3 • COACHES JACKET 454547
- 4 • PREMIUM ZIPPED HOODIE 454544    5 • WAFFLE KNIT 454628    6 • LADIES' SIGNATURE CREWNECK SWEATSHIRT 454542
- 7 • VISION FLAT CAP 454526    8 • YOUTH CURVED CAMO CAP 454557    9 • YOUTH CURVED CAMO CAP 454557

**+** More product information on pages 24–33.





1 · UTILITY OVERSHIRT 454552 2 · UTILITY PANT 454629 3 · COACHES JACKET 454547  
 4 · SHORT BEANIE 454560 5 · CAN-AM PREMIUM PULLOVER HOODIE 454545

➕ More product information on pages 27–28.



# PRODUCT INFORMATION

2023 APPAREL



**can-am**



- 20 HELMETS + GOGGLES
- 21 WINTER GEAR
- 23 MUD GEAR + WADERS
- 24 PERFORMANCE
- 25 PREMIUM
- 27 UTILITY
- 28 SIGNATURE
- 32 HATS + CAPS
- 34 SYSTEMS + BAGS
- 35 HOW TO MEASURE



## HELMETS + GOGGLES

UNISEX

## Can-Am Pyra Helmet

DOT ECE2205

929038 • XS, S, M, L, XL, 2XL, 3XL | Charcoal Grey (07), Red (30), Blue (80)

**Description:**

- Pyra Helmet (DOT/ECE) with plastic composite shell

**Features and technologies:**

- 4-year limited warranty.
- Advanced plastic composite shell with rotational impact absorbing system (ERT).
- Adjustable peak system.
- Removable wind deflector
- Front and rear hi-max air vent system to maximize cooling.
- Removable, washable and replaceable moisture-wicking liner.
- Lightweight double-D chin strap.
- Weight: ±1,295 g for size Large.
- DOT/ECE 2206 certified.

## Can-Am Pyra Dune Helmet

DOT ECE2205

929039 • XS, S, M, L, XL, 2XL, 3XL | Sand (03), Charcoal Grey (07), Grey (09), Red (30)

**Description:**

- Pyra Helmet (DOT/ECE) with plastic composite shell.

**Features and technologies:**

- 4-year limited warranty.
- Advanced plastic composite shell with rotational impact absorbing system (ERT).
- Adjustable peak system.
- Removable wind deflector .
- Front and rear hi-max air vent system to maximize cooling.
- Removable, washable and replaceable moisture-wicking liner.
- Lightweight double-D chin strap.
- Weight: ±1,295 g for size Large.
- DOT/ECE 2206 certified.

## Can-Am Exome Helmet

DOT ECE2205

929040 • XS, S, M, L, XL, 2XL, 3XL | White (01), Sand (03), Charcoal Grey (07)

**Description:**

- Exome Helmet (DOT/ECE) with plastic composite shell.

**Features and technologies:**

- 4-year limited warranty.
- Advanced plastic composite shell.
- Modular helmet.
- Removeable peak.
- Anti-scratch lens.
- Pinlock® ready (sold separately).
- Retractable sunvisor.
- 2 shell sizes for better fit and comfort.
- Quick-release chin strap.
- Eyeglass-ready.
- DOT/ECE 2206 certified.

UNISEX

**Can-Am Trench Goggles**

**448696** • One size

White (01), Charcoal Grey (07), Red (30), Blue (80)



**Features and technologies:**

- Injected PC lens with anti-scratch, anti-fog and distortion-free optics.
- Thermo-formed 3-layer face foam offers best fitting.
- No-slip silicone strap keeps goggles in place.
- Removable nose guard for extra deflection against debris.

**Can-Am Flint Dune Goggles**

**448726** • One size

Sand (03), Charcoal Grey (07), Grey (09), Red (30)



**Features and technologies:**

- Injected PC lens which is anti-scratch, anti-fog and distortion-free optics.
- Thermo-formed 3-layer face foam offers best fitting.
- No-slip silicone strap keeps goggles in place.
- Injection-molded PC cylindrical lens provides distortion-free vision and enhanced impact resistance.
- Tinted lens with anti-scratch and anti-fog performance with mirrored coating.
- Included extra clear lens for low-light condition.
- Removable nose guard for extra deflection against debris.

# WINTER GEAR

MEN'S

**Expedition Radiant Jacket**

**440982** S, M, L, XL, 2XL, 3XL

Black (90)



**Description and terrains:**

- Warm utility jacket.
- Use to work around your ATV or Side by Side.

**Features and technologies:**

- 200 g of insulation.
- Fabric performance 10,000 mm/5,000 g.
- Water-resistant Teflon coating.
- Under-arm vents.
- 8 multi-purpose pockets.

- Detachable hood.
- Wide reflective webbing for maximum visibility.
- Practical carabiner.
- Powder skirt.
- Reinforced elbows and forearms.
- Adjustable collar and wrists.
- Critical seam sealed.
- E LinQ system.
- Clim8 heated technology.
- Includes 1 battery and a charger.




**Performance:**

Waterproof

Breathability

Warmth

**Key benefits:**

-  CUTS WIND
-  REINFORCED
-  TEMPERATURE REGULATION

**Expedition Jacket**

**440964** • S, M, L, XL, 2XL, 3XL

Khaki (05), Black (90)



**Description and terrains:**

- Warm utility jacket.
- Use to work around your ATV or Side by Side.

**Features and technologies:**

- 200 g of EcoLoft insulation.
- Fabric performance 10,000 mm/5,000 g.
- Water-resistant Teflon coating.
- Under-arm vents.

- 8 multi-purpose pockets.
- Detachable hood.
- Wide reflective webbing for maximum visibility.
- Practical carabiner.
- Powder skirt.
- Reinforced elbows and forearms.
- Adjustable collar and wrists.
- Critical seam sealed.
- E LinQ system.

**Performance:**

Waterproof

Breathability

Warmth

**Key benefits:**

-  CUTS WIND
-  REINFORCED
-  REFLECTIVE



# WINTER GEAR

MEN'S

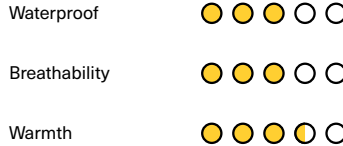
## Expedition Highpants

**286814** • XS, S, M, L, XL, 2XL, 3XL | Khaki (05), Black (90)



- Description and terrains:**
- Warm utility highpants.
  - Use to work around your ATV or Side by Side.
- Features and technologies:**
- 200 g of EcoLoft insulation.
  - Fabric performance 10,000 mm/5,000 g.
  - Water-resistant Teflon coating.
- Wide reflective webbing for maximum visibility.
  - Reinforced seat and inner legs.
  - Fleece-lined seat.
  - Storm gaiters.
  - 2 wide cargo pockets and 1 chest pocket.
  - Suspenders with loop adjustment.
  - Pre-shaped padded knees.
  - Velcro closure at fly.

**Performance:**



**Key benefits:**



## Expedition Radiant Gloves

**446346** • XS, S, M, L, XL, 2XL, 3XL | Black (90)



- Description and terrains:**
- Extra warm gloves for comfort in all riding conditions.
  - Use for snow riding.
- Features and technologies:**
- Top hand: 200 g PrimaLoft® Gold
  - Palm: 133 g PrimaLoft® Gold.
  - Waterproof, windproof and breathable glove insert.
  - Moisture-wicking fleece lining.
  - Includes 2 batteries and a charger
- Leather palm and fingers with grip reinforcement.
  - Touch-screen index finger.
  - Nose wipe on thumb.
  - Clim8 heated technology.

**Performance:**



## Expedition Gloves

**446337** • XS, S, M, L, XL, 2XL, 3XL | Khaki (05), Black (90)



- Description and terrains:**
- Extra warm gloves for comfort in all riding conditions.
  - Use for snow riding.
- Features and technologies:**
- Top hand: 200 g PrimaLoft® Gold
  - Palm: 133 g PrimaLoft® Gold.
  - Waterproof, windproof and breathable glove insert.
  - Naturally moisture-wicking and antimicrobial wool blend lining.
- Leather palm and fingers with grip reinforcement.
  - Touch-screen index finger.
  - Nose wipe on thumb.

**Performance:**



UNISEX

## Ultimate Trail Balaclava

**447736** • S/M, L/XL | Black (90)



- Description:**
- Perfect when used with the OXYGEN, BV2S or Modular 3 helmets.
- Features and technologies:**
- 60% polyester, 30% nylon, 10% spandex.
  - Keeps you warm while providing breathable and windproof performance.
  - Waterproof, windproof and breathable fabric at neck.
  - Moisture-wicking fabric.
  - Elastic channel at sides for contoured fit.

## Neck Gaiter

**447841** • One size | Black (90)



- Features and technologies:**
- 100% polyester.
  - Spandex binding and elastic at back for a better fit.
  - Anti-pilling fleece.

# MUD GEAR + WADERS

MEN'S

## Can-Am X Finntail Mudway Jacket

**286825** • XS, S, M, L, XL, 2XL, 3XL | Red (30), Army Green (77), Black (90)



### Description:

- Classic Finntail mud jacket for any weather conditions. No water or mud flying out of the wheels can spoil your ride if you have full protection with the jacket.
- For ATV and SSV mud riding and rainy conditions.

### Features and technologies:

- 100% windproof and waterproof.
- Durable 3L fabric with a HARD-TEX membrane.

### Fabric performance:

- 17,000 mm/7,000 g.
- Hydrophobic DWR coating.
- Magnetic flap with snaps.
- Mud-resistant main zipper.
- Tight rubber wrist cuffs preventing water ingress.
- Two spacious chest slip pockets and two inside chest pockets.
- 3M reflective elements.
- Removable zippered hood.
- Elastic belt.
- Walkie-talkie shoulder fastener.

## Can-Am X Finntail Enduro Waders

**286826** • XS, S, M, L, XL, 2XL, M PLUS, L PLUS, XL PLUS, 2XL PLUS | Army Green (77)



### Description:

- The "built to last a lifetime" waders out of a Finntail product line. This design has one-third fewer seams than the competitors, especially in the inner leg area.

### Features and technologies:

- 5-layer fabric with a HARD-TEX membrane.
- Durable, abrasion- and puncture-resistant outer layer.
- Reinforced below the waist.

### Fabric performance:

- 25,000 mm/7,000 g.
- Hydrophobic Teflon Coating.
- Ergonomic knee cut.
- Elastic suspenders and a belt with a YKK buckle.
- New spacious water-resistant chest pocket with a strong zipper and a protecting flap.
- Additional inside chest pocket for smartphone.
- Drying loops.
- Built-in comfortable 4 mm neoprene socks with a reinforced sole.
- Waterproof smartphone pouch and a carrying bag are included.

## Can-Am X Finntail Aquamaster Waders

**286827** • XS, S, M, L, XL, 2XL, M PLUS, L PLUS, XL PLUS | Red (30), Black (90)



### Description:

- The Aquamaster is a bestselling waders by Finntail. This model embodies all of the company's many years of experience in the manufacture and riders experience as well.

### Features and technologies:

- New 5-layer fabric with a HARD-TEX membrane.
- Durable, abrasion- and puncture-resistant outer layer.
- Reinforced inner leg areas, knees and seat.

### Fabric performance:

- 25,000 mm/7,000 g.
- Hydrophobic Teflon Coating.
- Elastic suspenders and a belt with a YKK buckle.
- New spacious water-resistant chest pocket.
- Additional inside chest pocket for smartphone.
- Drying loops.
- Built-in comfortable 4 mm neoprene socks with a reinforced sole.
- Waterproof smartphone pouch and a carrying bag included.

## Can-Am X Finntail Sportsman Boots

**444263** • 6, 7, 8, 9, 10, 11, 12, 13, 14 | Black (90)



### Description:

- The model boasts a highly distinctive design and the stoutest sole. The most wear-resistant fabric with extra reinforcement coating is used. The boots combine abrasion resistance and perfect comfort of sports shoes.

### Features and technologies:

- Damage-resistant and durable fabric.
- Solid rubber welt protection.
- Durable rubber outsole.
- Special mud-free tread.
- Strong ankle support.
- Neoprene elements for shock absorption and comfort.
- Reliable nylon bootlace.
- Extra pair of black lace-up.



# MUD GEAR + WADERS

MEN'S

## Mud Jacket

286676 • S, M, L, XL, 2XL

Clear (00), Matte Black (93)

286797 • S, M, L, XL, 2XL

Camo (37)



### Description:

- Mud jacket 100% waterproof PVC.

### Features and technologies:

- Electronically welded seams.
- Underarm and rear vent panels.
- Two hand pockets.
- Elastic cuffs.
- Drawstring hood and hem.

## Mud Pants

286128 • S, M, L, XL, 2XL

Clear (00), Matte Black (93)

286796 • S, M, L, XL, 2XL

Camo (37)



### Description:

- Oversized pants made of 100% waterproof PVC.

### Features and technologies:

- Electronically welded seams.
- Strategically placed ventilation.
- Side openings at bottom leg.

# PERFORMANCE

MEN'S

## Can-Am Windproof Jersey

454548 • S, M, L, XL, 2XL, 3XL

Camo (37), Navy (89), Black (90)



### Description:

- The perfect choice for those cooler/windy riding days.

### Features and technologies:

- Main fabric moisture wicking, lightweight and quick dry.
- Wind protection at front panel.
- Mesh fabric for extra ventilation at underarms.
- Drop tail provides added coverage.
- Silicone print on drop tail keeps jersey tucked in pants.
- Sublimated print.

## Can-Am Coaches Jacket

454547 • S, M, L, XL, 2XL, 3XL

Camo (37), Black (90)



### Description:

- Lightweight, weather-resistant Coaches jacket Can-Am.

### Features and technologies:

- Fabric performance 8,000 mm/800 g.
- Windproof.
- Water-repellent finish.
- Front matte finish snaps.

- Regular lining.
- Wrist adjustment with snap.
- Inside chest pocket with velcro closure.
- 2 hand pockets.

MEN'S

**Can-Am Performance Fleece Hoodie**

454627 • S, M, L, XL, 2XL, 3XL

Army Green (77), Black (90)

**Description:**

- Can-Am Performance Fleece Hoodie.

**Features and technologies:**

- 96% polyester, 4% spandex.
- Anti-microbial.
- High-density print.
- Brushed fleece inside for more softness.
- Adjustable hood with drawcord.
- Rib 1x1 at hem and cuffs.
- Kangaroo front pocket with 2 coated zippers with auto-lock.

**Can-Am Performance Jogger**

454630 • S, M, L, XL, 2XL, 3XL

Army Green (77), Black (90)

**Description:**

- Can-Am Performance Jogger.

**Features and technologies:**

- Gusset.
- Anti-microbial.
- High-density print.
- Brushed fleece inside for more softness.
- Drawcord adjustment at waist.
- Rib 1x1 at ankles.
- 2 zip hand pockets + 1 zip back pocket (coated zippers with auto-lock).

## PREMIUM

MEN'S

**Can-Am Tetra Jersey**

454550 • S, M, L, XL, 2XL, 3XL

Red (30), Army Green (77), Black (90)

**Description:**

- Lightweight jersey.

**Features and technologies:**

- 100% polyester.
- Quick-dry, moisture-wicking fabric for maximum comfort.
- Anti-microbial fabric.
- Mesh fabric for extra ventilation at underarms.
- Silicone print at drop tail keeps jersey tucked in pants.
- Sublimated print.

LADIES'

**Ladies' Can-Am Tetra Jersey**

454558 • XS, S, M, L, XL, 2XL

White (01), Black (90)

**Description:**

- Lightweight jersey.

**Features and technologies:**

- Quick-dry, moisture-wicking fabric for maximum comfort.
- Anti-microbial fabric.
- Mesh fabric for extra ventilation at underarms.
- Silicone print at drop tail keeps jersey tucked in pants.
- Sublimated print.



# PREMIUM

MEN'S

## Can-Am Puffer Jacket

454543 • S, M, L, XL, 2XL, 3XL

Autumn Red (14), Camo (37), Black (90)



### Description:

- Puffer Jacket with down-like insulation.

### Features and technologies:

- 100% stretchable polyester.
- Alternative down-like insulation.
- Welded pattern design.
- Removable hood.
- 2 hand pockets + 2 inner pockets for extra storage.
- Waist adjustment.
- Reflective detail.
- DWR (water-repellent finish).

## Can-Am Premium Zipped Hoodie

454544 • S, M, L, XL, 2XL, 3XL

Heather Grey (27), Camo (37)



### Description:

- Can-Am Premium full zip hoodie with heavyweight fleece.

### Features and technologies:

- 72% cotton, 23% polyester fleece, 5% spandex.
- Fleece: 320 gsm.
- Knit ribbing at cuff and bottom hem.
- Drawcord adjustment at hood.
- Double-lined hood: 100% cotton.

## Can-Am Premium Pullover Hoodie

454545 • S, M, L, XL, 2XL, 3XL

Heather Grey (27), Black (90)



### Description:

- Can-Am Premium pullover hoodie with heavyweight fleece.

### Features and technologies:

- 72% cotton, 23% polyester fleece, 5% spandex.
- Fleece: 320 gsm.
- Knit ribbing at cuffs and bottom hem.
- Kangaroo pocket.
- Drawcord adjustment at hood.
- Double-lined hood: 100% cotton.

## Can-Am Waffle Knit

454628 • S, M, L, XL, 2XL, 3XL

Army Green (77), Black (90)



### Description:

- Waffle knit long-sleeve tee.

### Features and technologies:

- 60% cotton, 40% polyester.
- Textured fabric knit.

## UTILITY

MEN'S

## Can-Am Utility Jacket

454525 • S, M, L, XL, 2XL, 3XL

Navy (89), Black (90)

**Description:**

- Heavy-duty Jacket with warm and comfortable lining for colder weather.

**Features and technologies:**

- Heavyweight: 300 gsm.
- Water-repellent and wind-resistant.
- Body and hood are lined with sherpa.
- Nylon lining in sleeves.
- Hood adjustment with drawcord.
- 1 zip chest pocket; 2 lower front pockets; 2 inside pockets for additional storage.
- Internal rib-knit storm cuffs.
- Drop tail.
- Waist adjustment.
- DWR (water-repellent finish).

## Can-Am Utility Overshirt

454552 • S, M, L, XL, 2XL, 3XL

Camo (37), Black (90)

**Description:**

- Can-Am Utility Overshirt with 2 chest flap pockets and 2 hand pockets.

**Features and technologies:**

- 90% acrylic, 10% sheep wool.
- Heavy Shirt: 300 gsm.
- Body lining with micro-sherpa 185 gsm.
- Stretchable.
- DWR finish (durable water-repellent).
- Garment wash.
- Can-Am branded snaps at center front, pockets and cuff.

## Can-Am Utility Pants

454629 • S, M, L, XL, 2XL, 3XL

Camo (37), Black (90)

**Description:**

- Utility Pants with slim fit.

**Features and technologies:**

- 98% cotton, 2% spandex.
- Gusset at crotch for movement ease and extra comfort.
- Reinforcement at hand pockets.
- Knife pocket (wearer left side).
- Zip pocket (wearer right side).
- 2 back pockets and 1 hiding card pocket.
- Garment wash.
- DWR finish (Durable water-repellent).
- In-and-out drawcord adjustment at waist.
- Anti-bacterial/anti-odor treatment.
- Belt loop.

## Can-Am Utility Shorts

454636 • S, M, L, XL, 2XL, 3XL

Camo (37), Black (90)

**Description:**

- Utility Shorts with slim fit.

**Features and technologies:**

- 98% cotton, 2% spandex.
- Gusset at crotch for movement ease and extra comfort.
- Reinforcement at hand pockets.
- Knife pocket (wearer left side).
- Zip pocket (wearer right side).
- 2 pack pockets + 1 hiding card pocket.
- Garment wash.
- DWR finish (Durable water-repellent).
- Anti-bacterial/anti-odor treatment.
- In-and-out drawcord adjustment at waist.
- Belt loop.



# UTILITY

MEN'S

## Can-Am Flannel Shirt

454553 • S, M, L, XL, 2XL, 3XL

Army Green (77), Black (90)



### Description:

- Can-Am flannel shirt with left zip chest pocket.

### Features and technologies:

- 98% cotton, 2% spandex.
- Flannel double compacted: 165 gsm.
- Bungee thumb hole.

## Can-Am Pit Shirt

454546 • S, M, L, XL, 2XL, 3XL

Charcoal Grey (07), Black (90)



### Description:

- Stretch, durable and anti-wrinkle short-sleeve button-up shirt to wear when you need to get the job done comfortably.

### Features and technologies:

- 60% cotton, 40% polyester.
- Teflon fabric protector; protects from stains.
- Zipped pocket at front (wearer left side).
- Hidden button placket.

# SIGNATURE

MEN'S

## Can-Am Emblem Jersey

454537 • S, M, L, XL, 2XL, 3XL

Red (30), Navy (89), Black (90)



### Features and technologies:

- 100% polyester.
- Quick-dry, moisture-wicking fabric for maximum comfort.
- Mesh fabric for extra ventilation at underarms.
- Sublimated print.

LADIES'

## Ladies' Can-Am Emblem Jersey

454539 • S, M, L, XL, 2XL

White (01), Black (90)



### Features and technologies:

- 100% polyester.
- Quick-dry, moisture-wicking fabric for maximum comfort.
- Mesh fabric for extra ventilation at underarms.
- Sublimated print.

KIDS'/TEEN

## Youth Can-Am Emblem Jersey

454540 • 3-4, 5-6, 7-8, 10-12, 14-16 | Navy (89), Black (90)



## Features and technologies:

- 100% polyester.
- Quick-dry, moisture-wicking fabric for maximum comfort.
- Mesh fabric for extra ventilation at underarms.
- Sublimated print.

UNISEX

## Can-Am Steer Gloves

446329 • S, M, L, XL, 2XL, 3XL | Deep Purple (42), Army Green (77), Navy (89), Black (90)



## Description:

- The Can-Am Steer glove is designed to be durable while offering a high level of ventilation and comfort in the hottest environment.

## Features and technologies:

- 75% nylon, 15% polyurethane, 9% chloroprene rubber.
- Moulded neoprene for fitted cuffs.
- Articulated fingers for easier movements.
- Injected TPR on knuckles for protection.
- Clarino nash layers on the palm for durability and comfort.
- Touch-screen at index and thumb.
- Ventilated air mesh fabric.

MEN'S

## Can-Am Signature Pullover Hoodie

454631 • S, M, L, XL, 2XL, 3XL | Heather Grey (27), Army Green (77), Navy (89), Black (90)



## Features and technologies:

- 60% cotton, 40% polyester fleece.
- Soft material with kangaroo pocket.
- Knit ribbing at cuffs and bottom hem.
- Drawcord adjustment at hood.

LADIES'

## Ladies' Signature Pullover Hoodie

454541 • XS, S, M, L, XL, 2XL | Heather Grey (27), Camo (37), Black (90)



## Features and technologies:

- 60% cotton, 40% polyester fleece.
- Soft material with kangaroo pocket.
- Knit ribbing at cuffs and bottom hem.
- Drawcord adjustment at hood.



## SIGNATURE

MEN'S

## Can-Am Signature Crew Fleece

454632 • S, M, L, XL, 2XL, 3XL

Heather Grey (27), Army Green (77), Navy (89), Black (90)

**Features and technologies:**

- 60% cotton, 40% polyester fleece.
- Knit ribbing at cuffs and bottom hem.

LADIES'

## Ladies' Signature Crewneck Sweatshirt

454542 • XS, S, M, L, XL, 2XL

Camo (37), Navy (89), Black (90)

**Features and technologies:**

- 60% cotton, 40% polyester fleece.
- Knit ribbing at cuffs and bottom hem.

MEN'S

## Can-Am Signature T-Shirt

454430 • XS, S, M, L, XL, 2XL, 3XL

Sand (03), Autumn Red (14), Heather Grey (27), Army Green (77), Navy (89), Black (90)

**Description and terrains:**

- Casual T-Shirt for everyday wear.

**Features and technologies:**

- Black: 100% cotton.
- Heather Grey: 60% cotton, 40% polyester jersey.

LADIES'

## Ladies' Can-Am Signature T-Shirt

454429 • XS, S, M, L, XL, 2XL

Autumn Red (14), Heather Grey (27), Navy (89), Black (90)

**Description and terrains:**

- Casual T-Shirt for everyday wear.

**Features and technologies:**

- Solid colors: 95% cotton, 5% polyester jersey.
- Heather colors: 60% cotton, 35% polyester, 5% spandex.
- Can-Am artwork at left chest.

MEN'S

## Off-Road T-Shirt

454530 • S, M, L, XL, 2XL, 3XL

Heather Grey (27), Black (90)

**Description and terrains:**

- Casual T-Shirt for everyday wear.

**Features and technologies:**

- Black: 100% cotton.
- Heather Grey: 60% cotton, 40% polyester jersey.
- Artwork at left chest and at back.

LADIES'

## Ladies' Off-Road T-Shirt

454528 • XS, S, M, L, XL, 2XL

Navy (89), Black (90)

**Description and terrains:**

- Casual T-Shirt for everyday wear.

**Features and technologies:**

- Black: 95% cotton, 5% polyester jersey.
- Navy: 60% cotton, 35% polyester, 5% spandex.
- Artwork at left chest and at back.

MEN'S

## 1973 T-Shirt

454531 • S, M, L, XL, 2XL, 3XL

Autumn Red (14), Army Green (77), Black (90)

**Description and terrains:**

- Casual T-Shirt for everyday wear.

**Features and technologies:**

- Solid colors: 100% cotton.
- Army Green: 60% cotton, 40% polyester jersey.
- Artwork at left chest and at back.

LADIES'

## Ladies' 1973 T-Shirt

454554 • XS, S, M, L, XL, 2XL

Sand (03), Heather Charcoal (29)

**Description and terrains:**

- Casual T-Shirt for everyday wear.

**Features and technologies:**

- Camo: 95% cotton, 5% polyester jersey.
- Sand: 60% cotton, 35% polyester, 5% spandex.
- Artwork at center front.

MEN'S

## Triagonal T-Shirt

454555 • S, M, L, XL, 2XL, 3XL

Autumn Red (14), Black (90)

**Description and terrains:**

- Casual T-Shirt for everyday wear.

**Features and technologies:**

- 100% cotton.
- Artwork at center front and at back.



## SIGNATURE

MEN'S

## Estd T-Shirt

454626 • XS, S, M, L, XL, 2XL, 3XL | Sand (03), Army Green (77), Black (90)

**Description and terrains:**

- Casual T-Shirt for everyday wear.

**Features and technologies:**

- Black: 100% cotton.
- Heather colors: 60% cotton, 40% polyester jersey.
- Artwork at left chest and at back.

KIDS'/TEENS'

## Youth Estd T-Shirt

454556 • 3-4, 5-6, 7-8, 10-12, 14-16 | Navy (89), Black (90)

**Description and terrains:**

- Casual T-Shirt for everyday wear.

**Features and technologies:**

- 100% cotton.
- Artwork at center front and at back.

## HATS + CAPS

MEN'S

## Can-Am 5-Panel Cap

454532 • One size | Army Green (77), Black (90)

**Description:**

- Lightweight ripstop Can-Am 5-panel cap.

**Features and technologies:**

- Snapback closure at back.
- Sewn welded Can-Am patch and flag label.

## Can-Am Flex Fit Cap

454533 • S/M, L/XL, 2XL | Heather Grey (27), Black (90)

**Description:**

- Fitted cap with regular curved peak.

**Features and technologies:**

- 100% cotton
- Can-Am woven patch centered at front.
- Can-Am embroidery logo at back.
- Inside Can-Am branded tape.

## ESTD Flat Mesh Cap

454618 • One size | Army Green (77), Black (90)

**Description:**

- Lightweight Can-Am mesh cap with flat peak.

**Features and technologies:**

- 100% cotton.
- Snapback closure at back.
- Can-Am print centered at front.
- Inside Can-Am branded tape.

MEN'S

**Can-Am Signature Cap****454524** • One size

Sand (03), Autumn Red (14), Heather Charcoal (29), Army Green (77), Navy (89), Black (90)

**Features and technologies:**

- 100% cotton.
- Snapback closure at back.

**Vision Flat Cap****454526** • One size

Camo (37), Black (90)

**Description:**

- Vision cap with flat peak.

**Features and technologies:**

- 100% cotton.
- Snapback closure at back.
- Inside Can-Am branded tape.

KIDS'/TEENS'

**Youth Curved Camo Cap****454557** • One size

Red (30), Pink (36)

**Description:**

- Youth curved cap with mesh panels.

**Features and technologies:**

- Snapback closure at back.
- 3D puff Can-Am embroidery logo.
- Camo print at front.
- Contrast color under peak.
- Inside Can-Am branded tape.

**Can-Am Short Beanie****454560** • One size

Army Green (77), Black (90)

**Description:**

- Short beanie with the Can-Am logo.

**Features and technologies:**

- 95% acrylic, 4% nylon, 1% spandex.
- Short beanie with rollover cuff.
- Fisherman look.

**Reversible Beanie****454561** • One size

Charcoal Grey (07), Autumn Red (14), Whiskey (28), Army Green (77)

**Description:**

- 2-in-1 reversible hat with knit-in logos.

**Features and technologies:**

- 95% acrylic, 4% nylon, 1% spandex.

UNISEX

**Can-Am Tube****454563** • One size

Sand (03), Charcoal Grey (07), Camo (37)

**Description:**

- Multi-purpose, stretch and comfortable tubular headwear.

**Features and technologies:**

- 88% polyester, 12% spandex.
- 12 different configurations: bandana, headband, balaclava and more.



## SYSTEMS + BAGS

Sena 5S<sup>+</sup> Bluetooth<sup>+</sup> Comm System

448755 • Single pack / One size

448756 • Dual pack / One size

Black (90)

**Description:**

- Sena 5S Bluetooth Comm System.

**Features and technologies:**

- Bluetooth 5.
- HD speakers.
- HD intercom.

- Intercom 700 m / 0.4 mi.
- Two-way intercom.
- Multi-language voice command.
- Audio multitasking™.
- LCD display.
- Smartphone app.
- FM radio.

## Sena 50R H/K Bluetooth Comm System



448771 • Single pack / One size

448772 • Dual pack / One size

Black (90)

**Description:**

- Sena 5S Bluetooth Comm System with superior audio quality.

**Features and technologies:**

- Sound by harman/kardon®.
- Mesh 2.0: Robust Reliability.
- One-click-to-connect simplicity.
- Mesh Intercom™ features superior audio quality.
- Multi-channel protocol in Open Mesh allows users to switch between 9 comm channels.

- Bluetooth® 5 enabled.
- Sena's new benchmark for HD speakers.
- Convenience of voice-activated digital assistant access ("Hey Google"/"Hey Siri").
- 30% faster rapid-charging.
- Included Wi-Fi Adapter which charges and installs updates automatically.
- An elegant, glove-friendly three-button interface.
- Voice commands recognized across 8 languages.

## Can-Am 90 L Gear Bag



469316

Charcoal Grey (07)

- Large main compartment with easy access to all gear.
- Large separated boot pocket.
- Zippered accessory pocket.
- Easy-grab handles for transport.
- Detachable shoulder strap.
- Heavy-duty reinforced base.
- 90 L capacity.
- 900 D polyester.

## Can-Am Duffle Backpack



469317

Charcoal Grey (07)

- Duffel bag with shoulder strap, can transform into a backpack.
- Adjustable shoulder and chest straps and foam padding on straps for comfort.
- 45 L capacity.
- 900 D polyester.

## Can-Am Laptop Backpack



469318

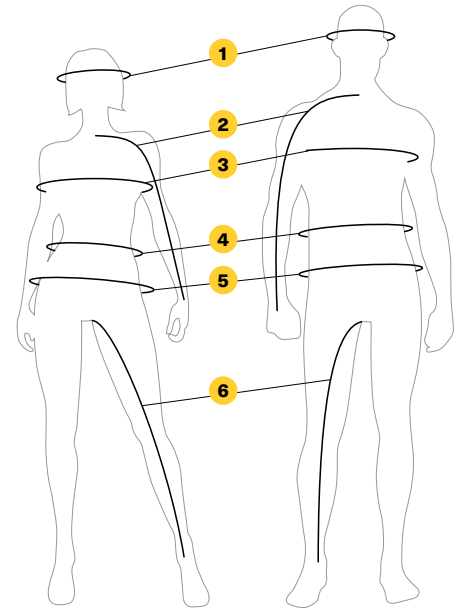
Charcoal Grey (07)

- Laptop/Tablet pocket holds laptops up to 15".
- Rain cover.
- Fleece-lined sunglasses pocket.
- Adjustable shoulder and chest straps.
- Organization pocket with key clip.
- Foam padding on straps and back for comfort.
- Carry-on slider.
- Side water bottle pouch.
- 900 D polyester.

# HOW TO MEASURE

- For best results, have someone else take measurements.
- Measure body in underwear.
- Tape must be snug but not tight.
- If measurements fall between two sizes, order the larger size.

<b>1 HEAD</b>	Around your head, from the center of the forehead, above the ears and over the natural bump at the back of the head.
<b>2 ARM LENGTH</b>	Let the hands hang down on the side in a slightly bent position. Measure from the center of the back of your neck, along the length of your arm, to the wrist.
<b>3 CHEST / BUST</b>	Measure under your arms, around the fullest part of your chest.
<b>4 WAIST</b>	Measure around your natural waistline, keeping one finger between the tape and body.
<b>5 HIPS</b>	Across the fullest part of the seat.
<b>6 INSEAM</b>	Without shoes, from crotch to the floor.



## WHAT CODE REPRESENTS YOUR SIZE?

1. Find your size.
2. The corresponding code is **THE CODE** you use to complete the part number on your order. **Example:** 440227\_\_90 Size: M = Code "06", therefore 4402270690

SIZE	CODE	SIZE	CODE	SIZE	CODE	SIZE	CODE	SIZE	CODE	SIZE	CODE
One Size	00	XL	12	4XLT	19	6	25	13	33	7-8	54
XS	02	XLT	13	5XL	88	7	27	14	34	10-12	49
S	04	2XL	14	1	20	8	28	16	35	14-16	50
M	06	2XLT	15	2	21	9	29	18	78	S/M	72
MT	07	3XL	16	3	22	10	30	3-4	79	M/L	91
L	09	3XLT	17	4	23	11	31	5-6	52	L/XL	73
LT	10	4XL	18	5	24	12	32	6-8	48		

## APPAREL & SPORTSWEAR

### MEN-5'7"- 6'0"

	XS	S	M	L	XL	2XL	3XL
Chest	34-36	36-38	38-41	41-45	45-49	49-53	53-57
Waist	28-30	30-32	32-35	35-39	39-43	43-48	48-52
Hips (seat)	34-36	36-38	38-41	41-45	45-49	49-53	53-57
Arm length	30	31	32	33	34	35	35
Inseam	31	31½	32	32	32	32	32

### LADIES-5'3"- 5'8"

	XS	S	M	L	XL	2XL	3XL
Chest	32-34	34-36	36-39	39-42	42-46	46-50	50-54
Waist	26-28	28-30	30-33	33-36	36-40	40-44	44-48
Hips (seat)	35-37	37-39	39-42	42-45	45-49	49-53	53-57
Arm length	30	30	30½	31	31½	32	33
Inseam	30	30	30	30	30	30	30

## GLOVES (measure palm width)

MEN							LADIES				
	S	M	L	XL	2XL	3XL	S	M	L	XL	2XL
Palm (inches)	3¼	3½	4	4½	5	5½	2¾	3	3½	4	4½
Palm (cm)	8	9½	10	11.5	13	14	7	8	9	10	11.5

## HELMETS

### MEN & LADIES

	XS	S	M	L	XL	2XL	3XL
Head (inches)	20 7/8-21 ¼	21 5/8-22	22 3-22 ¾	23 3/8-23 5/8	24-24 3/8	24 3/4-25 1/8	25 1/2-25 7/8
Head (cm)	53-54	55-56	57-58	59-60	61-62	63-64	65-66



[CAN-AMOFFROAD.COM](http://CAN-AMOFFROAD.COM)

